

The Rest-Q® series of mattresses

Advanced, Non-Mechanical Pressure Redistribution

Standard Rest-Q



- Shear-force reducing, non-stretch Top Cover is sewn, not heat-sealed, for greater durability. Our uniquely treated nylon fabric provides healthcare's most effective barrier against fluid, moisture-vapor, and viral penetration.
- Multiple layers of HR (high resiliency) open-celled foams provide support, comfort and pressure redistribution better than that of more costly mechanical support surface designs.
- The Rest-Q's unique design off-loads pressure away from the patient's boney prominences for enhanced long-term comfort, high-risk protection and for effective wound treatment.
- To ensure patient safety and product durability, extra-wide, extra-firm edging is bonded to the mattress core and to the underside of the mattress' top cushion. Laminating both the horizontal and vertical planes creates a more stable and durable mattress.

Rest-Q GS – GSL or GSC “Gentle Strength”

- GS designs utilize a unique blend of materials that deliver the **Gentle** protection for the smallest of patients and the **Strength** to comfortably and safely support the heaviest of patients.
- Adding special layers of HR foam provide enhanced support, balanced immersion, and pressure redistribution for patients weighing less than 100 lbs. and also for those weighing more than 500 lbs.
- **Each GS mattress is made to fit atop any hospital bed manufacturer's frame...and function better than the original.**



Rest-Q GSV

Shaped to Fit....

...Engineered to Perform

- This (High Specification, High Resiliency) design brings unmatched comfort and pressure redistribution into a non-mechanical replacement mattress.
- **The Rest-Q GSV unique shape and design fits and functions atop a V-Shaped bed platform...Perfectly.**

For additional product information, clinical reports and to receive evaluation mattresses please call
Comfortex at 1-800-445-4007.

American College of Physicians (*Annals of Internal Medicine* 2015)

Recommends the use of an Advanced Static Mattress as they will provide equal or better outcomes than mechanical systems (Low Airloss & APP pads). They recommend against using the mechanical support surfaces, because the quality of evidence evaluating these surfaces is limited and the harm from these type surfaces has been poorly reported. The guidelines also state **that the cost of the mechanical systems is expensive and adds an unnecessary burden on healthcare.**

For more than 30 years, Comfortex has pioneered advanced mattress alternatives.

Our Rest-Q mattresses are made to redistribute pressure effectively, survive years of healthcare conditions, and most of all, to complement the care Nursing provides...**and do so for pennies per day.**



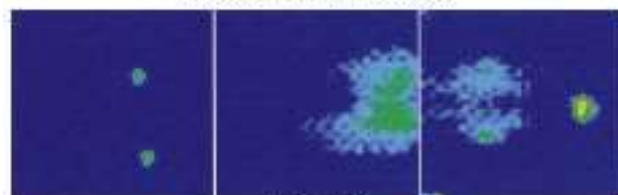
Low Airloss bed

\$40 / day



Low Airloss mattress

\$10 / day



Rest-Q

Own for less than 50¢ / day



Stop Moisture, Prevent Contamination

The FDA recently issued an alert about failed healthcare mattress covers, resulting in mattress contamination and infection control risks.

Comfortex is not on that list.

Stretch fabrics... Why we don't

When subjected to the real-world conditions of weight, heat, and moisture, waterproof stretch fabrics, having microscopic pores which stretch open, allow moisture vapors to pass through into the mattress or cushion. The result can be wet cores and a contaminated surface. Comfortex' non-shearing Stratos nylon DOES NOT stretch and has an unmatched 20-year history of protection and performance.

* **Comfortex Nylon Fabric**

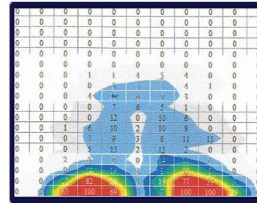
Moisture Vapor Transmission rate of 0.5 to 0.8 Grams/hr/m2 * **Prevents** mattress contamination

* **Commonly Used Waterproof Stretch Fabric**

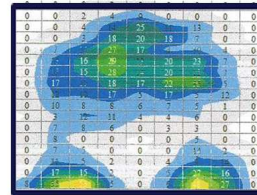
Moisture Vapor Transmission rate of 9.4 to 16.0 Grams/hr/m2 * **Permits** mattress contamination

Edge of Bed Sitting

The Rest-Q GSV's design prevents harsh pressure beneath the thighs.



Original Mattress



Rest-Q GSV mattress

Pain Reduction and Comfort

A German Institute of Health study compared the Comfortex Rest-Q mattress and the Tempur® Memory Foam mattress with patients suffering chronic pain.

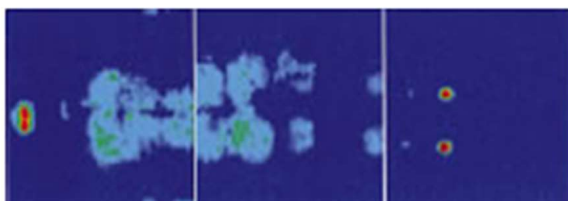
Patient Comfort			
Comfortex Rest-Q	20	15	6
Tempur Memory Foam	2	25	14
	Much Improved	Improved	No Change

Also reported:

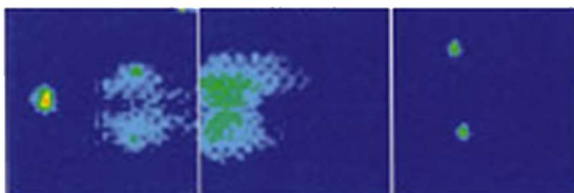
Call lights to address comfort issues were reduced by **43%** on the Rest-Q mattress.

Requests for pain medications were **24%** less on the Rest-Q and no reduction noted on the Tempur mattress.

Interface Pressure Testing



Low Airloss Mattress



Rest-Q Mattress

World class excellence supported by years of documented performance.

Pressure testing illustrates the Rest-Q's performance potential.



1

Long Term Care Center, Hillman, MI

90 yr. old female resident, wheelchair bound, 24- hour nursing care.

Location:	Initial findings - 4/23/09	Final findings - 6/18/09
Left crease of Buttocks	2.8 cm x 1.7cm x 0.3cm	Healed

Conclusion: Ulcers have improved/healed very quickly on this resident faster than they would have from an alternative method. She had trialed multiple interventions prior to changing mattresses with a slow healing process noted. Her multiple diagnoses were barriers also to her wound healing.

2

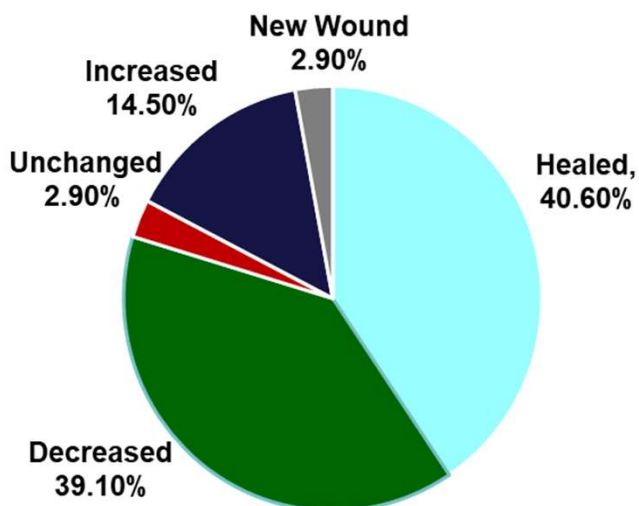
Long Term Care Center, Sterling, MI.

46 yr. old female with multiple sclerosis, bedridden, large advanced necrotic pressure wound sacrococcygeal area.

Location:	Initial findings/ 3/14/09	Final findings/ 5/13/09
Coccyx	4 cm x 2.8cm x 1.2 cm	2.1cm x 1.9cm x1.4cm

Conclusion: Ulcer improved. Cost savings because there are no rental cost. Decrease in intensity of pain and discomfort.

Summary of Wound Change



Proven Treatment Outcomes

(Independent, multi-site Studies)

30 patients with pressure wounds were taken off more costly Group II surfaces and moved to the non-mechanical Rest-Q™ mattress.

Nearly 80% of those wounds improved or healed.

For additional product information, clinical reports and to receive evaluation mattresses please call

Comfortex at 1-800-445-4007.