



Comfortex® Behavioral Healthcare

Closed System® mattresses

Our mattresses are recognized by the
Behavioral Health Facilities Design Guide (Page 128 item 492d)

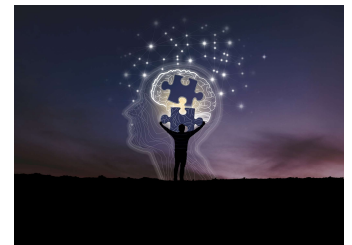


Meets **Behavioral Health** unit safety
requirements with a comfortable dual
layered core and sealed
cover construction.

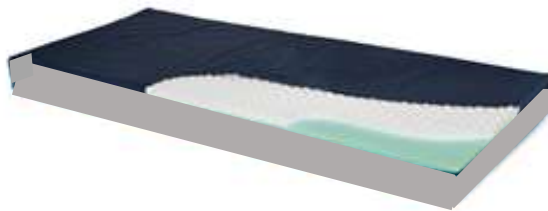
No Zippers

Handles or Vents...

...No Access.

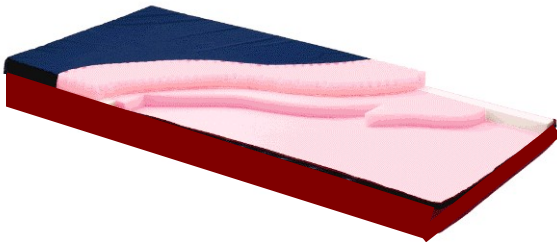


Available for:



XtendaCare CS

Soft, highly resilient top layer with a supportive base increases comfort and prevents patients from bottoming-out.



Newlife CS

This rotatable mattress offers high resiliency support, with softer areas beneath the shoulders and heels, for enhanced patient comfort.

**Advanced Pressure
Redistribution**



Rest-Q CS

Clinically proven pressure redistribution & shear reduction for higher risk prevention & wound care.

Clinical studies and product comparisons show the Rest-Q surpasses far more costly surfaces for pain management and wound treatment. (stages 1-4)

Surpass Behavioral Health unit safety requirements with comfortable multi-layered cores and a unique sealed, Virus-Barrier cover.

Closed System mattresses by Comfortex®

For more than 30 years,
Comfortex has specialized in
Healthcare mattresses. Lay the
mattresses we've made, one atop
each other, that stack would
surpass the Empire State
Building....128 times over.

**And practice
makes Perfect.**

***Comfort can't be measured...
...or can it?***



Thousands of providers
trust Comfortex ... But your
experience is all that
matters.

A German Institute of Health pain study compared the Comfortex Rest-Q® mattress and the Tempur® Memory Foam mattress with patients suffering chronic pain.

Patient Comfort			
Comfortex Rest-Q	20	15	6
Tempur Memory Foam	2	25	14
	Much Improved	Improved	No Change

Which Meant:



Call Lights requesting assistance with positioning or other comfort measures were reduced by 43% when on the Rest-Q® and 18% on the Tempur mattress.

Pain Medications were requested 24% less when on Rest-Q's, but no reduction when on the Tempur.



Comfortex does not make mattresses for Prisons or College Dorms. Patient care has always been our focus, as it is for our customers.

Comfortex Behavioral Health Mattresses & Cushions compliment the care you provide better and longer than all others.