



Response™

Stretcher Mattresses

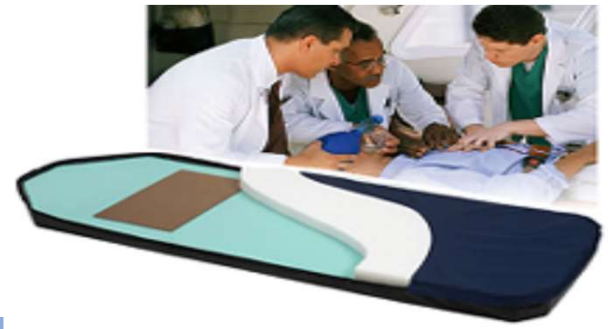
Whether a short trip from room to radiology, or a pre-op, post-op marathon, the stretcher cushion has a huge impact on your patient's healthcare experience.



- * ***Specially Engineered Top Covers*** are healthcare's most effective barrier against fluid penetration. Testing shows that moisture, vapor, even viruses, won't pass thru and hide inside the cushion.
- * ***High Resiliency Core Materials*** gently absorb body contours and provide years of comfortable support and protection.
- * ***Embedded CPR Boards*** are undetected by the patient, but if CPR support is ever needed the Response...Responds.
- * ***Our "Gentle Giant" Mattress*** incorporates a special Ultra Supportive HR material, resulting in a stretcher mattress that while comfortable for very light patients, provides the needed support for the largest of Bariatric Patients.

Comfortex 1-800-445-4007

Crafted to Support & Serve



4-inch Response

- 2" 2.5 HR Comfort & Pressure Redistribution
- 2" 1.8 lb. Firm Base prevents bottoming out

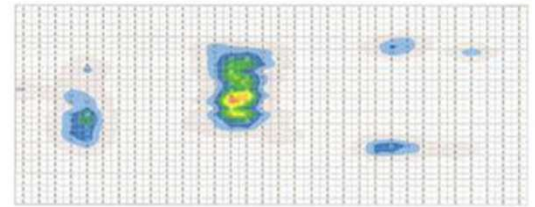
5-inch Response

- 3" 2.5 HR Comfort & Pressure Redistribution
- 2" 1.8 lb. Firm Base prevents bottoming out

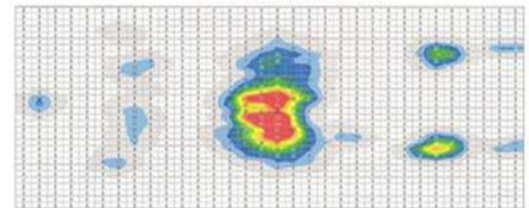
5-inch Gentle Giant Response

- 3" 3.5 lb. Ultra Plush HR for resilient support, long lasting comfort and advanced pressure redistribution
- 2" 1.8 lb. Firm Base prevents bottoming out

Comfortex 5-inch Cushion
335 lbs Patient



Competitor's 5-inch Cushion
335 lbs Patient

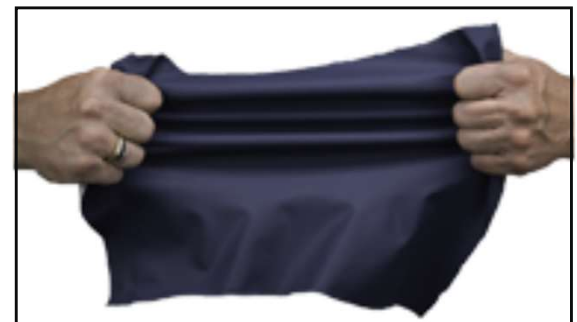


- Undetectable, embedded CPR Boards.
- Advanced Infection Control Protection.
- Costs Less...Lasts Longer.

Stretch fabric...Why we don't

When subjected to the real-world conditions of weight, heat, friction and moisture, stretchable fabrics can allow moisture vapor to be drawn into the cushion, causing infection control issues.

Comfortex's shear force reducing fabric DOES NOT stretch and WILL STOP mattress contamination.



Comfortex Hospital Mattresses
40-Years of Design & Manufacturing Excellence
1-800-445-4007
See more at Comfortexinc.com